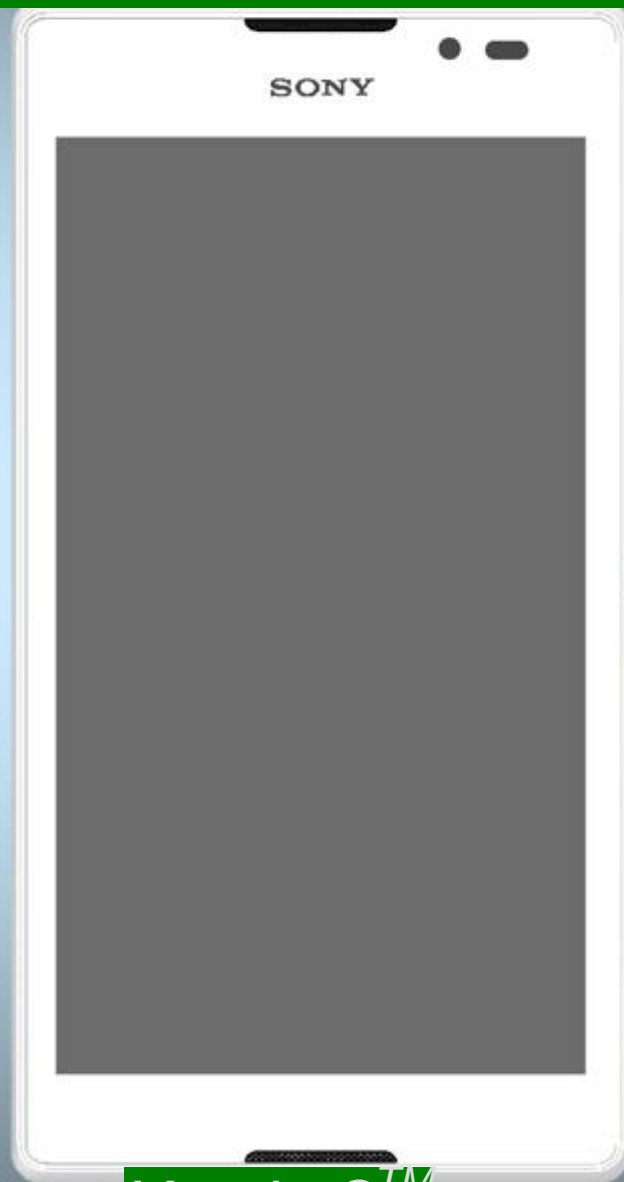


Component Replacement

- electrical -



Xperia C™
C2304, C2305, S39h

CONTENTS

1 Replaceable Components 3

2 Component Placing..... 5

3 Additional Repair info 6

4 Revision History 8

For general information about electrical repair related issues, refer to 1220-1336: Generic Repair Manual - electrical

Test after electrical replacement: refer to 1273-1772 Mechanical Test Instruction

Do not remove shield can lids (Heat pasta are added and RF performance will be damaged)

1 Replaceable Components

EXPLANATION OF ABBREVIATIONS USED IN THE COLUMN 'COMMENTS' BELOW

COMPONENT LOCATION

P = Primary side

S = Secondary side

REPAIR METHOD

HA = Hot Air (removal & mounting)

ST = Soldering Tool (removal & mounting)

HA/ST = Hot Air for removal - Soldering Tool for mounting

BGA = BGA Station

BH = Bottom Heater

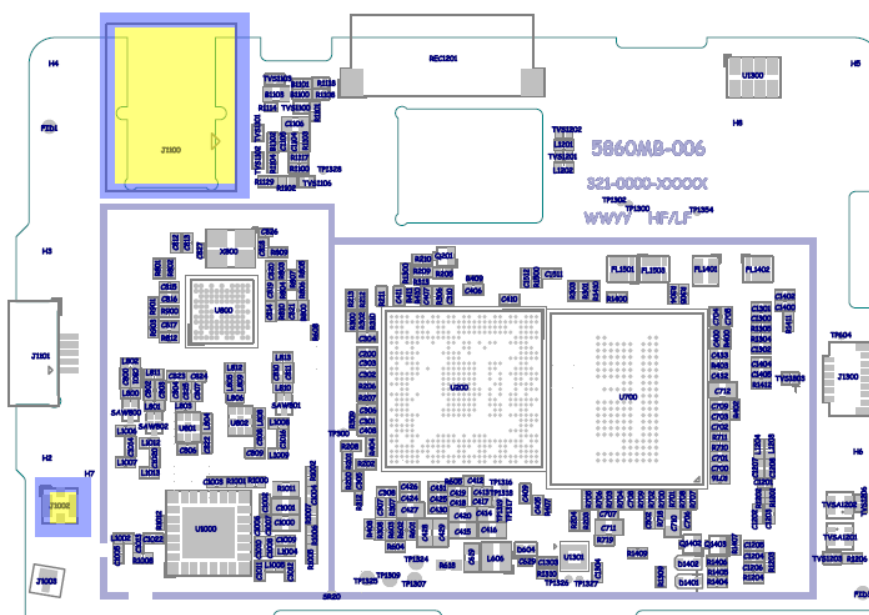
ADDITIONAL INFORMATION

⇒1 (2,3,4, etc.) = Proceed to 'Additional Repair Info' for further instructions in the indicated section(s).

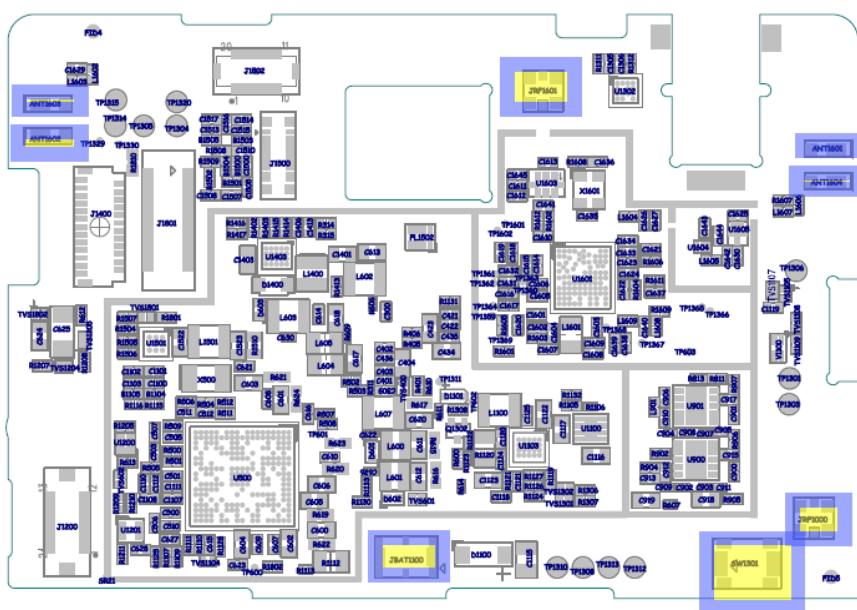
Position	Component	Part no.	Comments
ANT1601	Connector Leaf Spring Plug 1p Antenna	A/314-0000-00659	S HA+BH ⇒1
ANT1602	Connector Leaf Spring Plug 1p Antenna	A/314-0000-00659	S HA+BH ⇒2
ANT1603	Connector Leaf Spring Plug 1p Antenna	A/314-0000-00659	S HA+BH ⇒2
ANT1604	Connector Leaf Spring Plug 1p Antenna	A/314-0000-00659	S HA+BH ⇒1
J1002	RF Coax Connector	A/314-0000-00831	P HA+BH ⇒3
J1100	Audio Jack Connector	A/314-0000-00815	P HA+BH or BGA ⇒4
JBAT1100	Battery Connector	A/314-0000-00818	S HA+BH ⇒5
JRF1000	Connector Coax Receptacle 1p test switch	A/314-0000-00282	S HA+BH ⇒6
JRF1601	Connector Coax Receptacle 1p test switch	A/314-0000-00282	S HA+BH ⇒7
SW1301	Input Switch (Reset button)	A/315-0000-00071	S HA+BH ⇒8

2 Component Placing

To access the Component Placing document, double-click the icon below.
Applicable for on-screen viewing only – icon not shown on hard-copies.



Primary side



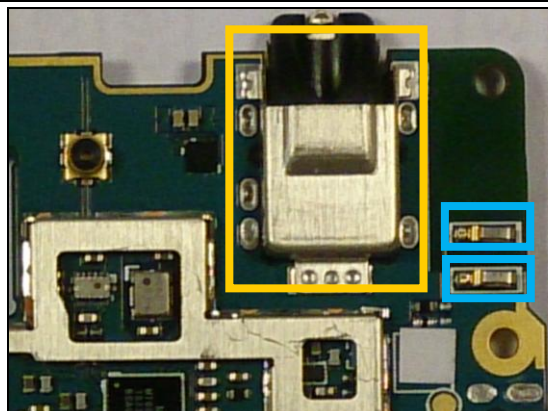
Secondary side

3 Additional Repair info

1

ANT1601, ANT1604

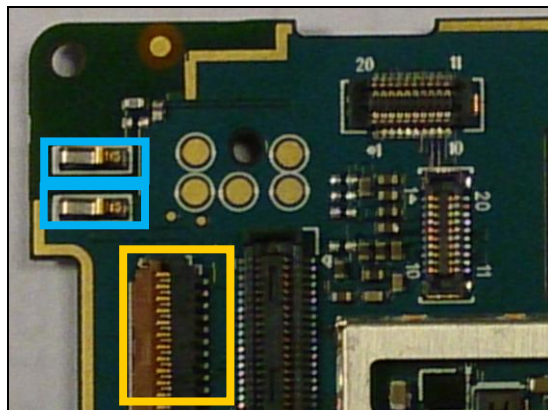
*Replace if mechanical damaged. (No or bad GPS)
Protect the Audio Jack connector with capton tape!*



2

ANT1602, ANT1603

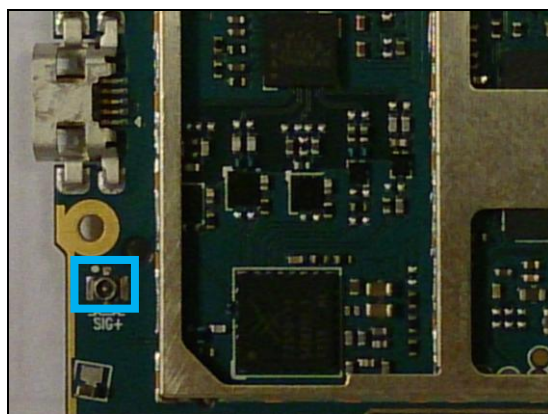
*Replace if mechanical damaged. (No or bad WLAN/ BT)
Protect the BtB connector with capton tape!*



3

J1002

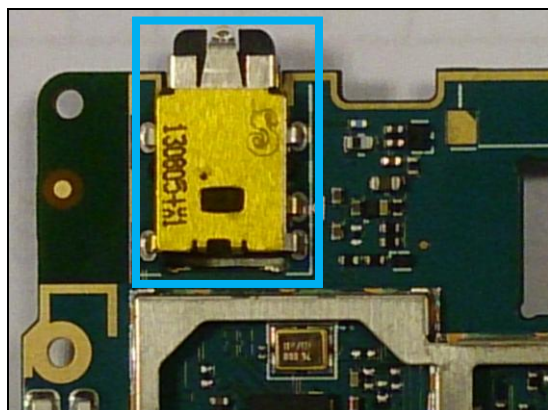
*Replace if mechanical damaged. (No or bad network,
main antenna)*



4

J1100

*Replace if mechanical damaged. (No or bad audio in
headset)*

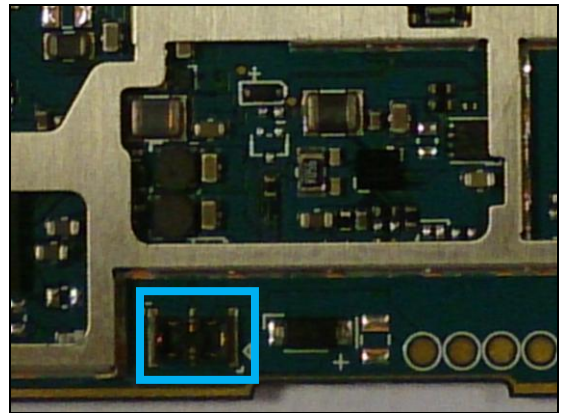


Repair Actions: Additional Repair Info

5

JBAT1100

Replace if mechanical damaged. (Phone dead or power off)

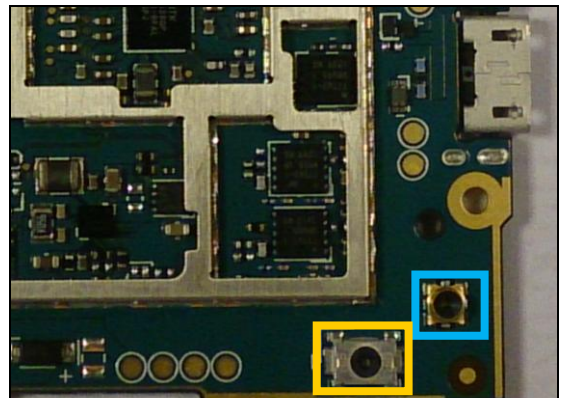


6

JRF1000

Replace if open circuit 1-2 (No or bad network, main antenna)

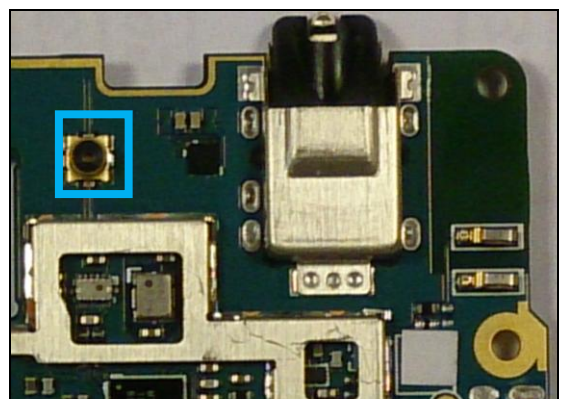
Protect the input switch with capton tape!



7

JRF1601

Replace if open circuit 1-2 (No or bad WLAN/ BT)

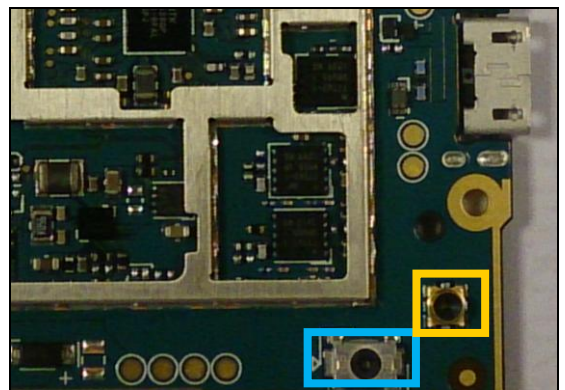


8

SW1301

Replace if short circuit (Restart) or if open circuit when pushed (reset not possible).

Protect the RF connector with capton tape!



4 Revision History

Rev.	Date	Changes / Comments
1	2014-05-13	Initial release
2	2014-08-14	J1101 USB connector removed from parts list. (Side glued)